

GERARS MILL ROAD

1357'

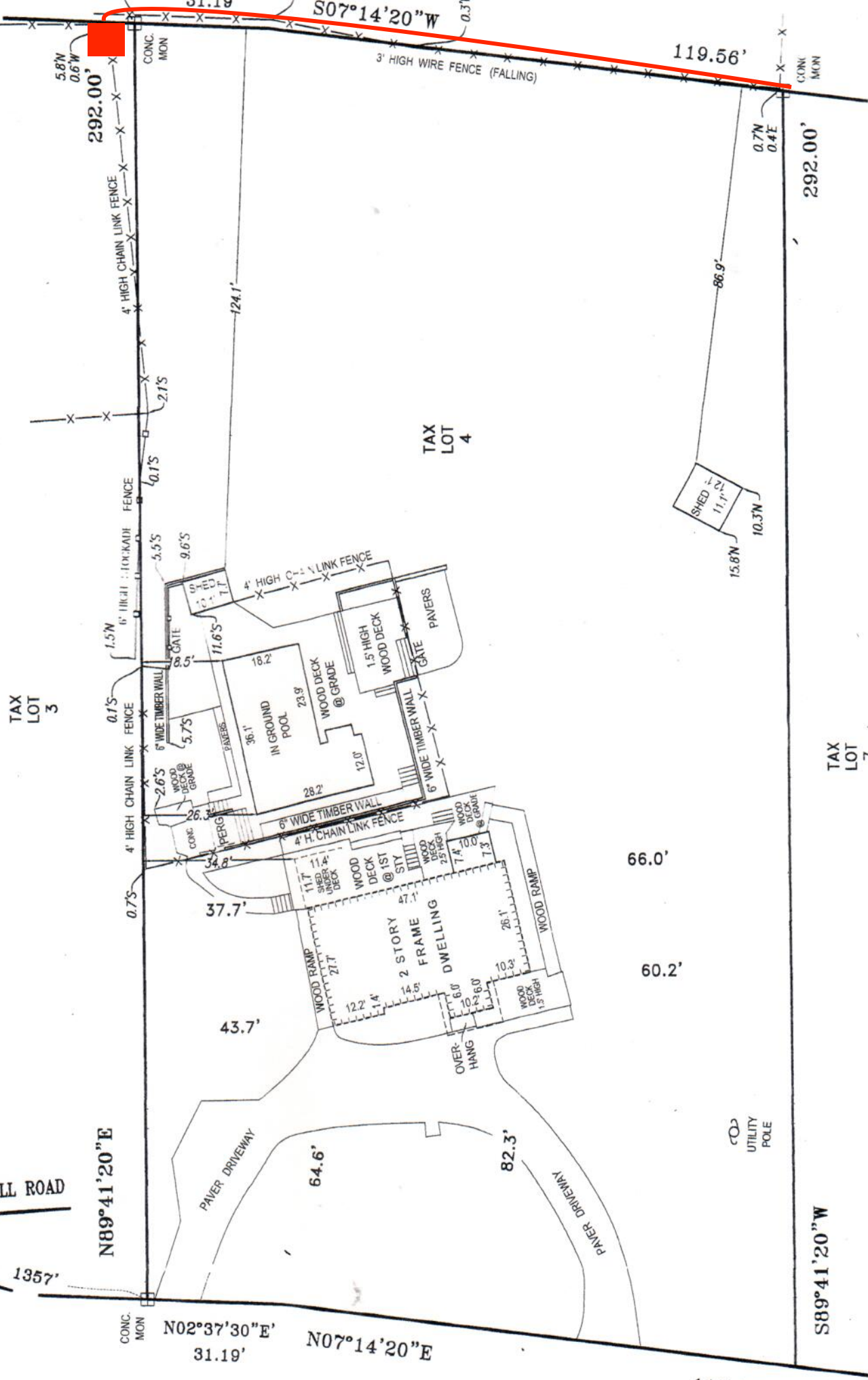
N89°41'20"E

CONC. MON N02°37'30"E 31.19'

N07°14'20"E

119.56'

S89°41'20"W



TAX LOT 3

TAX LOT 4

TAX LOT 7

5.8'N
0.6'W
292.00'

31.19'

S07°14'20"W

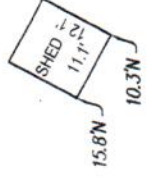
0.3'N

119.56'

CONC. MON

0.7'N
0.4'E
292.00'

86.9'



1.5'N
0.1'S

0.1'S

0.7'S

37.7'

43.7'

64.6'

82.3'

66.0'

60.2'

5.5'S
9.6'S

11.6'S

5.7'S

2.6'S

34.8'

21.7'

11.7'

11.4'

12.2'

14.4'

14.6'

12.0'

23.9'

18.2'

36.1'

28.2'

28.2'

28.2'

28.2'

28.2'

28.2'

28.2'

28.2'

28.2'

28.2'

28.2'

28.2'

28.2'

28.2'

28.2'

28.2'

28.2'

28.2'

28.2'

28.2'

28.2'

28.2'

28.2'

28.2'

28.2'

28.2'

28.2'

28.2'

28.2'

28.2'

28.2'

28.2'

28.2'

28.2'

28.2'

28.2'

28.2'

28.2'

28.2'

28.2'

28.2'

28.2'

28.2'

28.2'

28.2'

28.2'

28.2'

28.2'

28.2'

28.2'

28.2'

28.2'

28.2'

28.2'

28.2'

28.2'

28.2'

28.2'

28.2'

28.2'

28.2'

28.2'

28.2'

28.2'

28.2'

28.2'

28.2'

28.2'

28.2'

28.2'

28.2'

28.2'

28.2'

28.2'

28.2'

28.2'

28.2'

28.2'

28.2'

28.2'

28.2'

28.2'

28.2'

28.2'

28.2'

28.2'

28.2'

28.2'

28.2'

28.2'

28.2'

28.2'

28.2'

28.2'

28.2'

28.2'

28.2'

28.2'

28.2'

28.2'

28.2'

28.2'

28.2'

28.2'

28.2'

28.2'

28.2'

28.2'

28.2'

28.2'

28.2'

28.2'

28.2'

28.2'

28.2'

28.2'

28.2'

28.2'

28.2'

28.2'

28.2'

28.2'

28.2'

28.2'

28.2'

28.2'

28.2'

28.2'

28.2'

28.2'

28.2'

28.2'

28.2'

28.2'

28.2'

28.2'

28.2'

28.2'

28.2'

28.2'

28.2'

28.2'

28.2'

28.2'

28.2'

28.2'

28.2'